

The following items define the sizes used in the standard SwayLOCs currently offered.

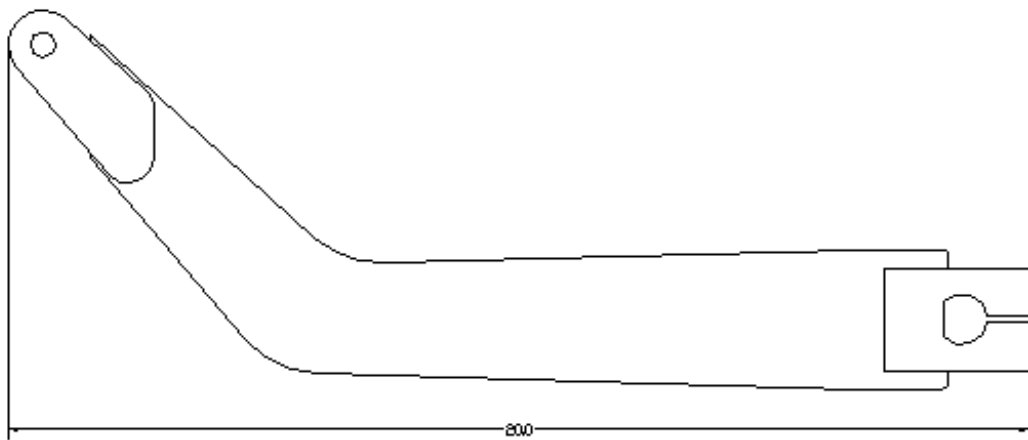
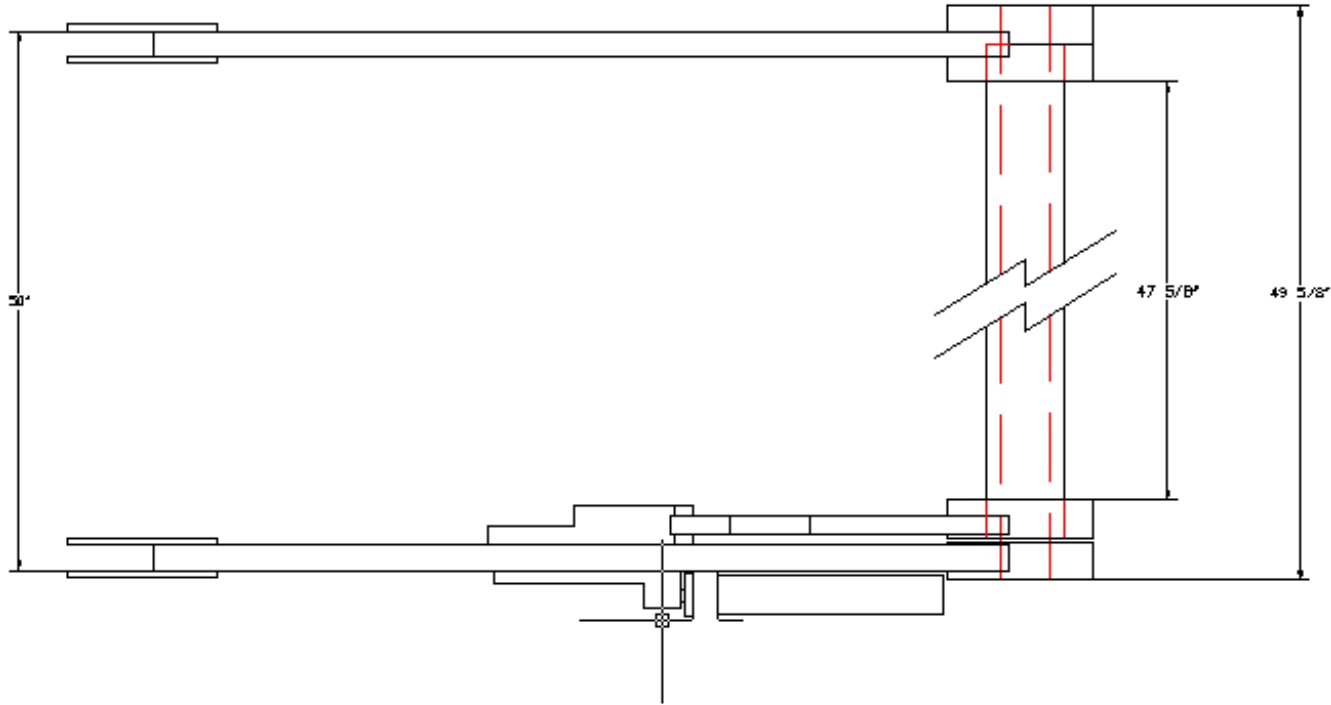
The length of the bars can be adjusted, for a custom size, if needed. Additional fees apply and a custom size requires payment in full at time of order, no refund once bars are cut.

The parts are shown with the arms assembled, the dimension from inside to inside of each arm is critical. The bushings will be added to there, and depending on bushing the mounting width will adjust shorter accordingly.

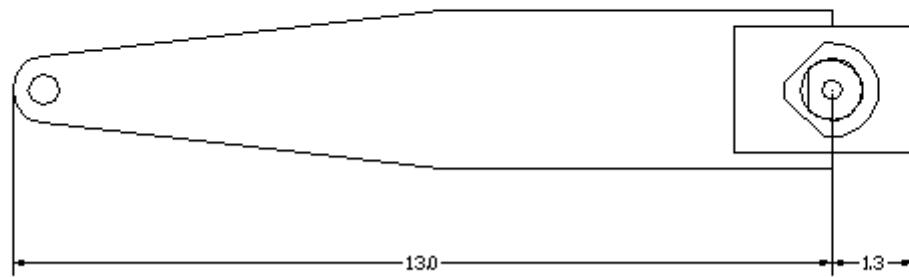
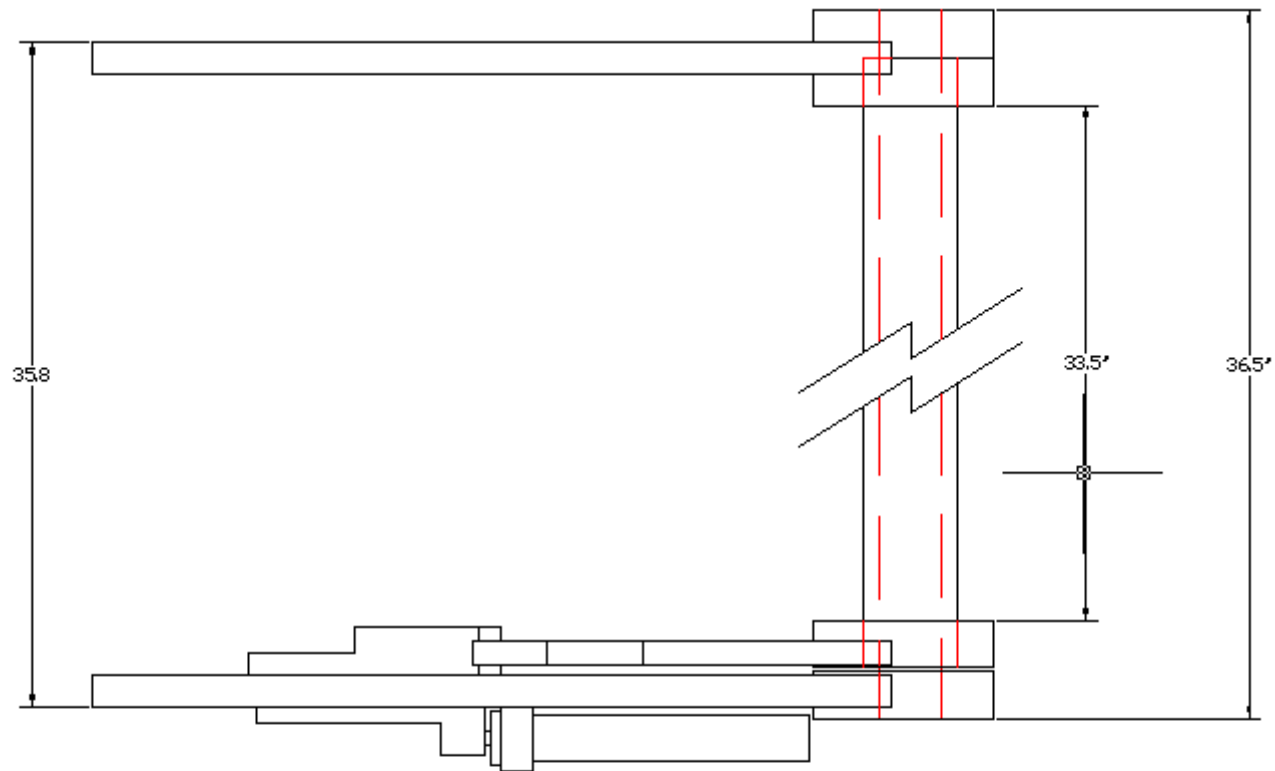
The 1.74" OD bushings are designed to fit inside the alluminum mount we use on the JK, making that a bolt on assembly. This mount may be placed nearly anywhere on the bar, additional spacers may be added to allow the mounts to be mounted on a narrower frame.

The 1.74" OD bushings also fit inside of a 2" OD 0.120" wall section DOM tubing, which may be welded into the chassis. We do recommend these bushings to be able to be lubed, the bushings come with a groove and port for the lube, you will need to drill/tap the tube for a 5/16" grease zerk accordingly.

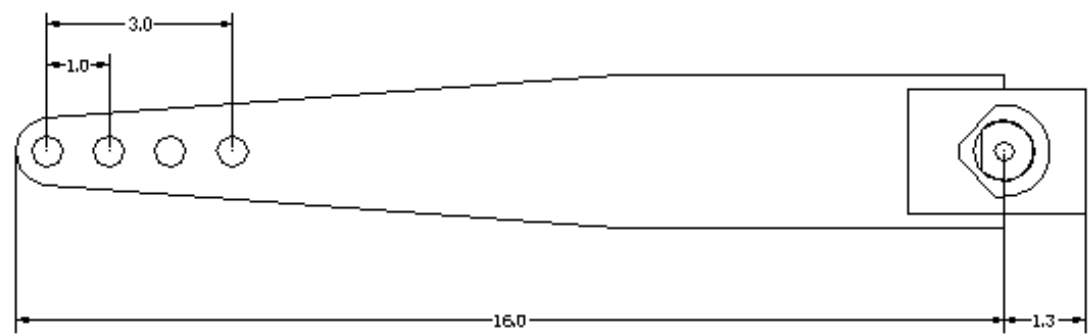
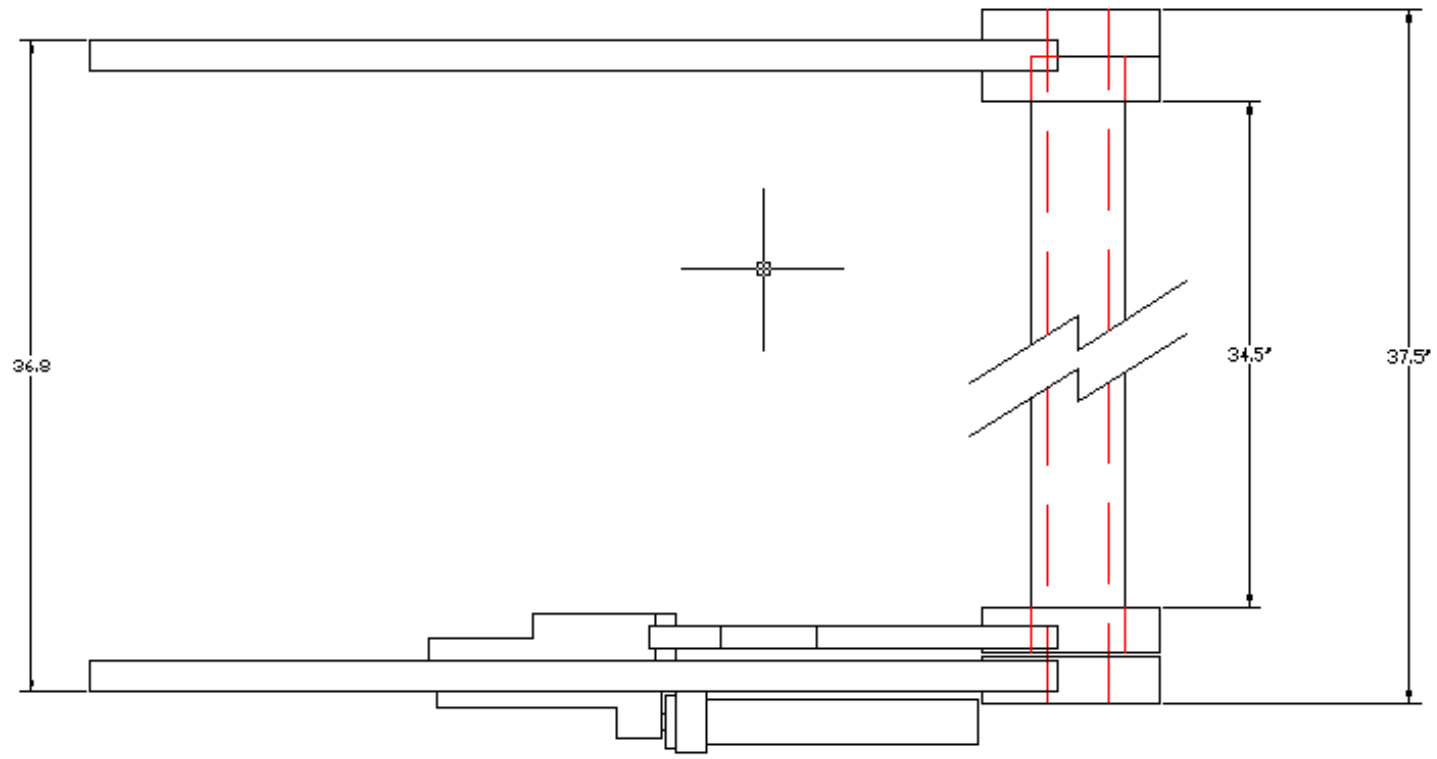
The arms are interchangeable from bar to bar, so if there is a bar length shown that will work, but the arm on that configuration isn't going to work, pic an arm that will.



JK SwayLOC REAR

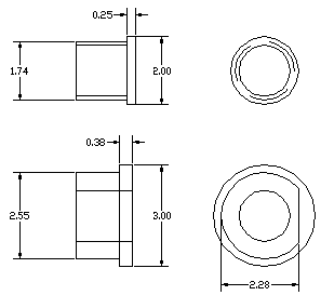


JK SwayLOC Straight Arms

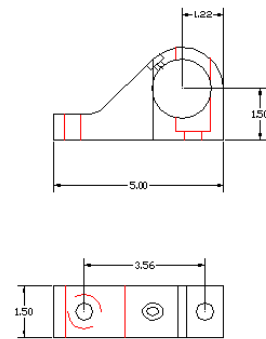


TJ SwayLOC OffRoadOnly

JK Bushing, for mount or 2" 0.120 wall DOM

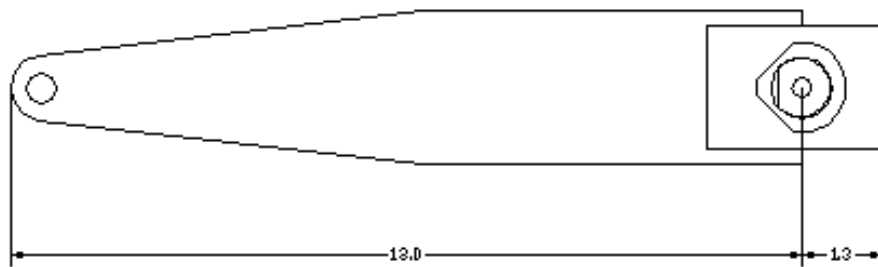
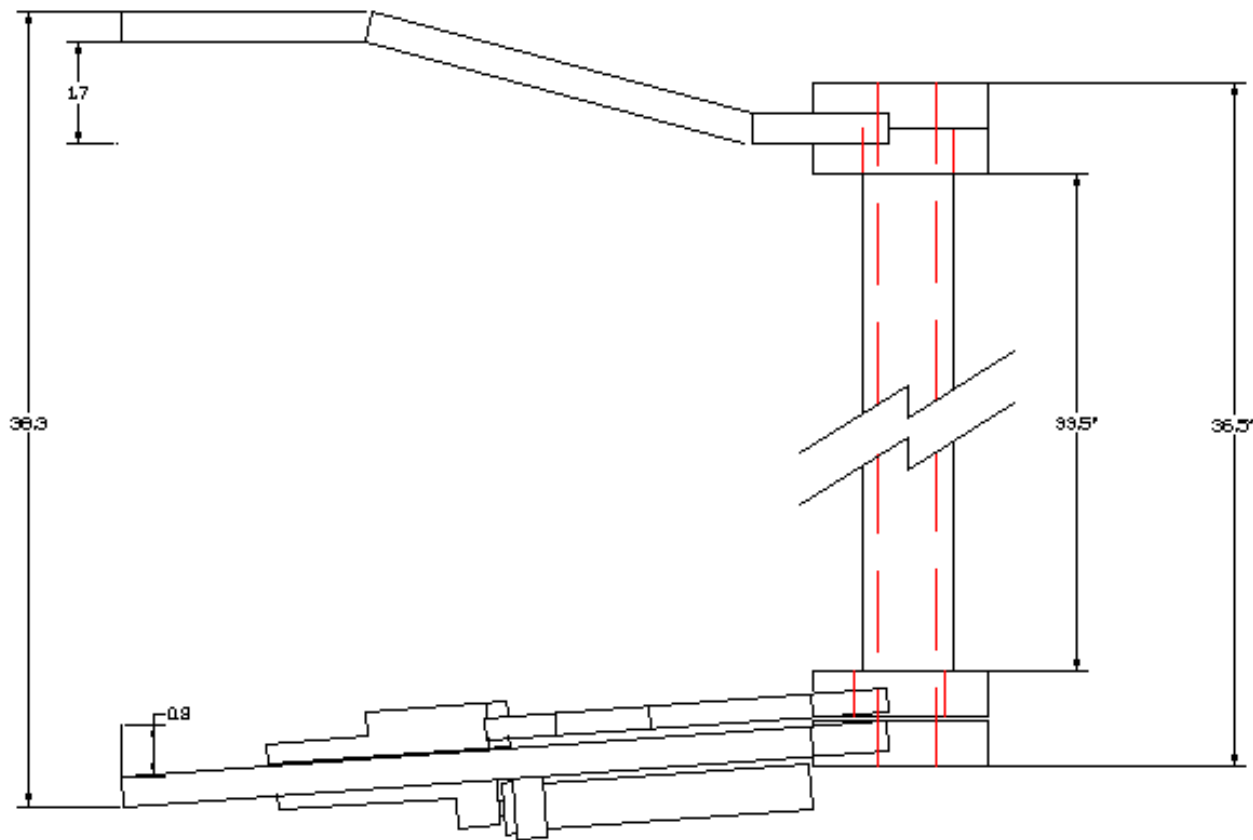


TJ bushing, also fits 2.5" ID tubing



JK Mount use with bushing





JK SwayLOC Angled Arms