



LiteBOX

Wrangler JK Fast Flash kit

Off Road Only

ph 651.644.2323

www.offroadonly.com

oro-info@offroadonly.com

This installation document is to document the installation of the ORO LiteBOX for Jeep Wrangler JK. The idea here is to allow the factory electronics to work properly by keeping the turn signal bulb in the circuit. This box is designed to accept the stock bulb socket and mount to the inner fenderwell. This being a mount for the bulb, a heat sink and a protector to keep harness and stuff from getting to the bulb.



LitePANEL components

- A. Aluminum formed LiteBOX
- B. #8 self tapping screws
- C. Slide on clips for easy retaining

Tools necessary:

- #2 phillips screwdriver to remove stock taillights

The turn signal flash rate will be maintained by keeping the turn signal bulb in the circuit. This means that the bulb needs to be mounted so it can remain lit inside the fender well, while protecting the harness and other items from the heat. That's the reason for the LiteBOX's, the aluminum triangle shaped boxes you see in the kit. The parts are shown in the image to the right.

Notice that the odd shaped cutout will accept the socket for the turn signal bulb.

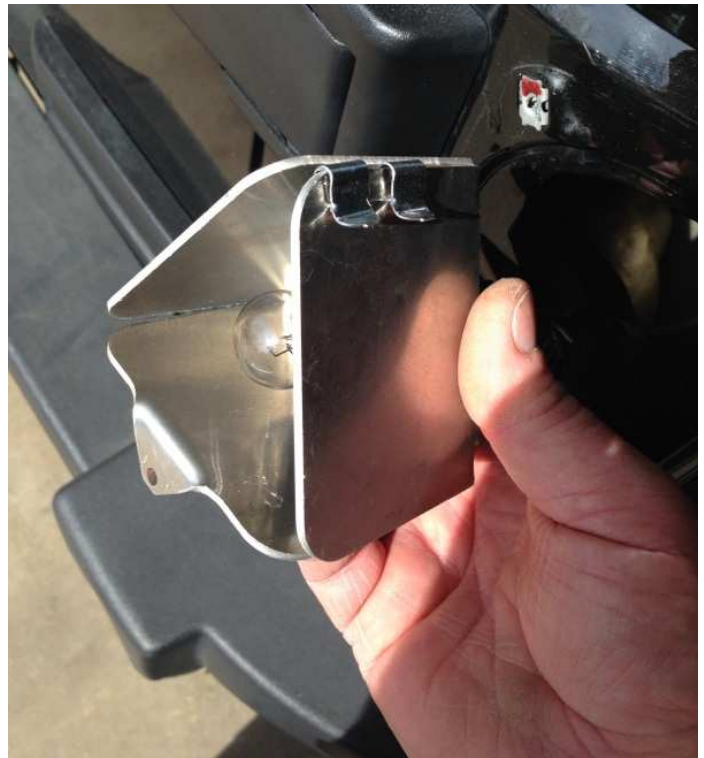
These LiteBOX's, one per side, will be mounted inside the wheel well area, thru the taillight opening. When mounted this will give the bulb a spot to sit and not bounce around as well as the aluminum will help to disperse the heat generated. Try to mount so that there is no harnesses resting directly on the aluminum.



To mount the LiteBOX's, there are 4 clips supplied. These clips slide easily over the edge of the aluminum and then will allow you to slide them over an edge of sheet metal inside of the wheel well, easily holding them in place. You may also screw them in place with the supplied screw should you wish to do that. In the image to the right, you can see where we slide the clips on and ready the LiteBOX for installation on the passenger side.

Before you mount this, you may wish to wire the taillight in, as you will connect the wires between the bulb and the connector, and upon installing the aluminum box you may find it a challenge to make that connection inside the wheel well.

LiteBOX positions, you can mount them wherever you see fit inside the wheel well. We have found the following places to work the best. On the driver side, we attach to a sheet metal piece that allows the box to be positioned below the gas filler tube, down low. On the passenger side we find an area above the tailgate hardware (pay attention to the moving pieces inside this area, open/close tailgate before you mount) and attach it high to the outside of the Jeep.



Last step is to wire your LED taillights in, attach the wires between the OEM harness connection and the bulbs and the turn signal flashers should work as they originally did.

Thank you for your purchase of the OffRoadOnly LiteDOT, LitePANEL and LiteBOX products.